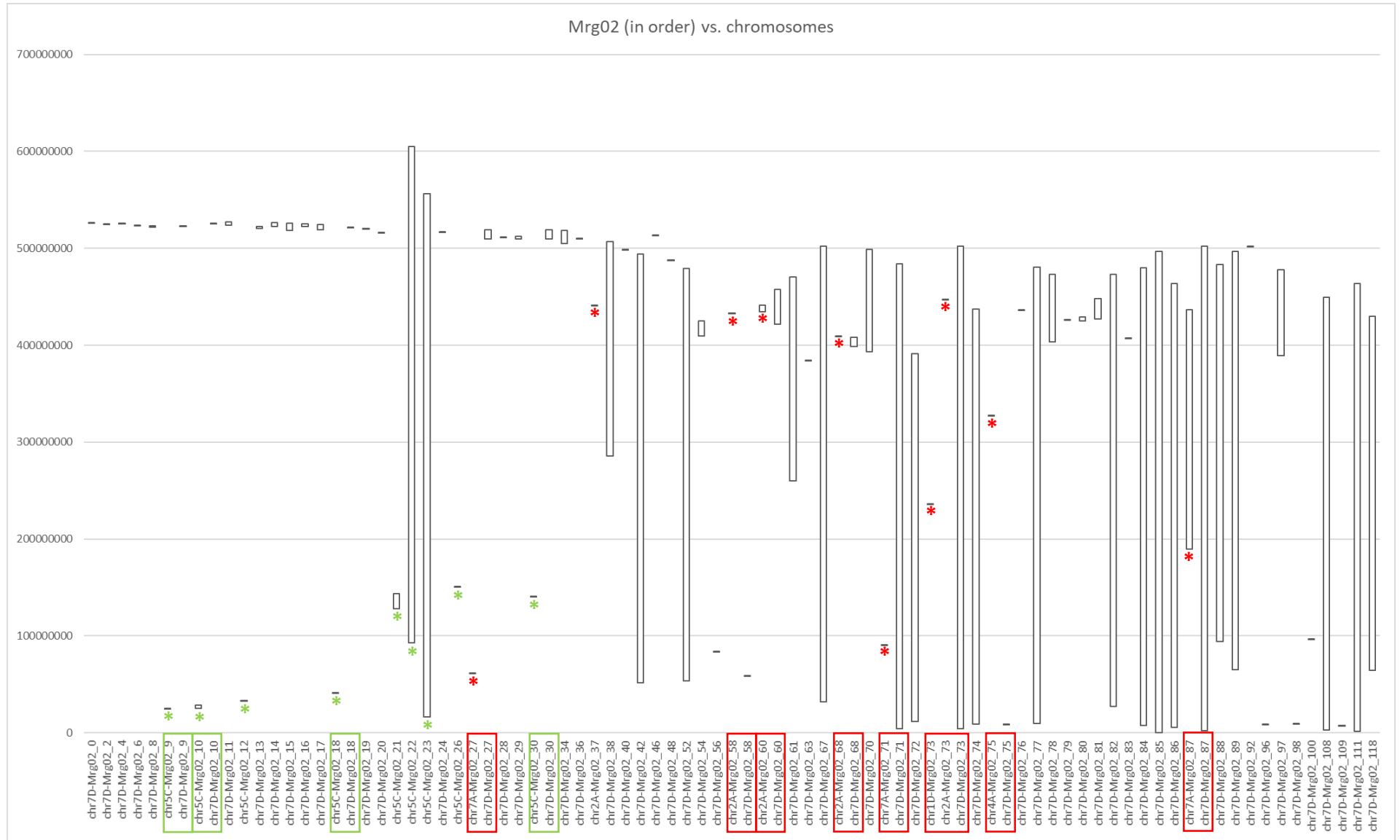


Mostly Chr1D, but

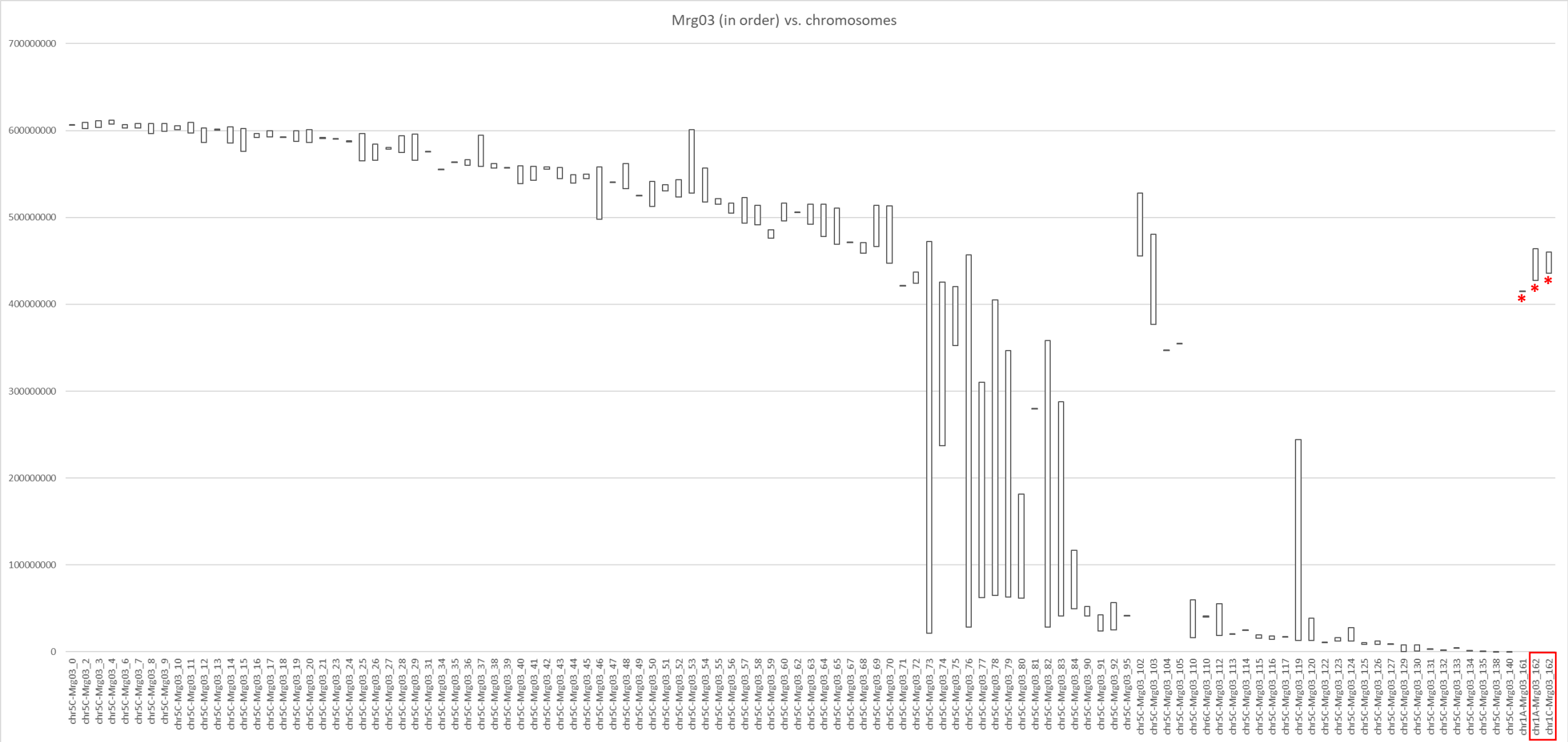
* = Chr1A regions

* = Chr4A regions



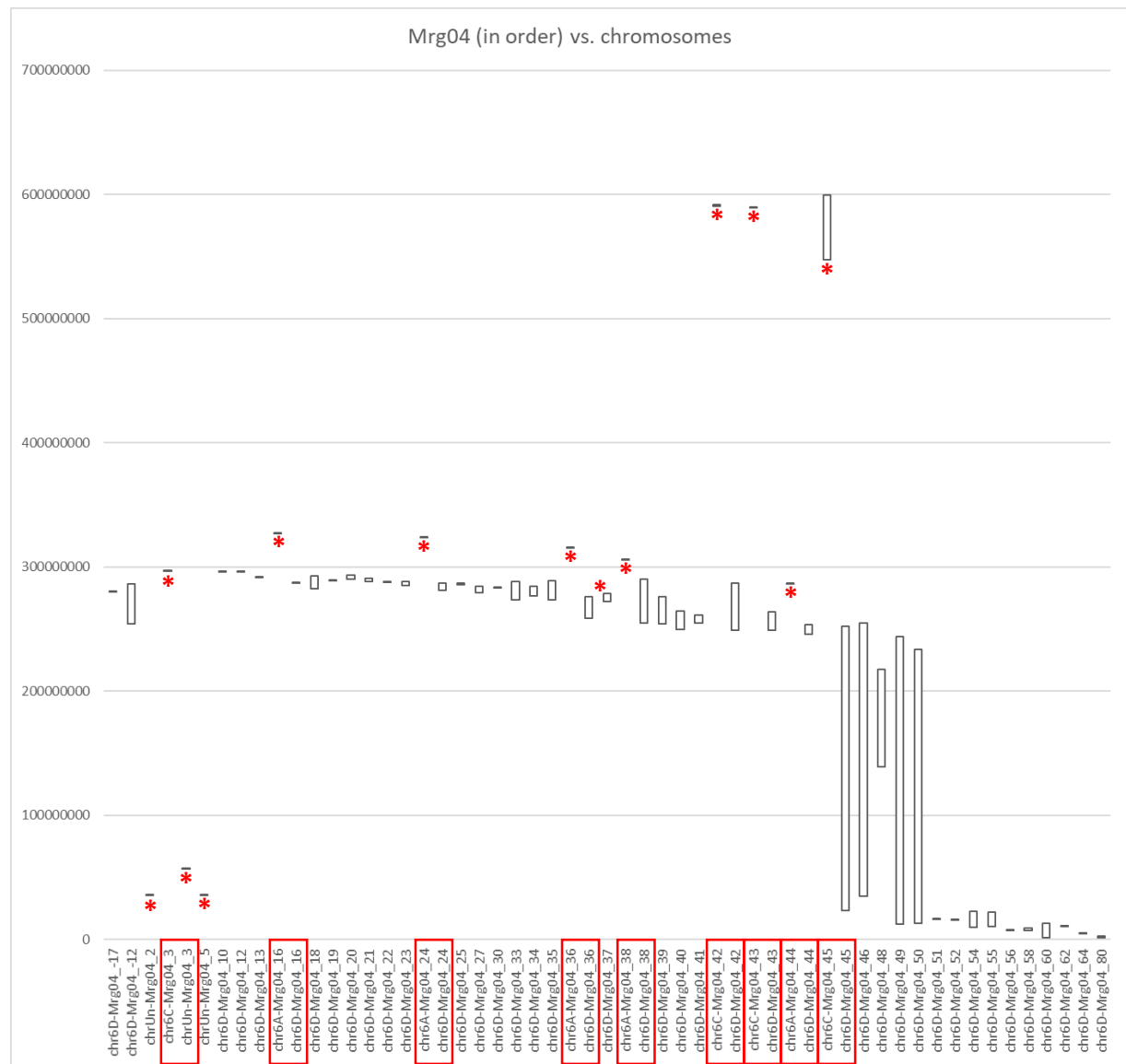
Mostly Chr7D, but

* = Chr5C regions; * = other Mrg group regions



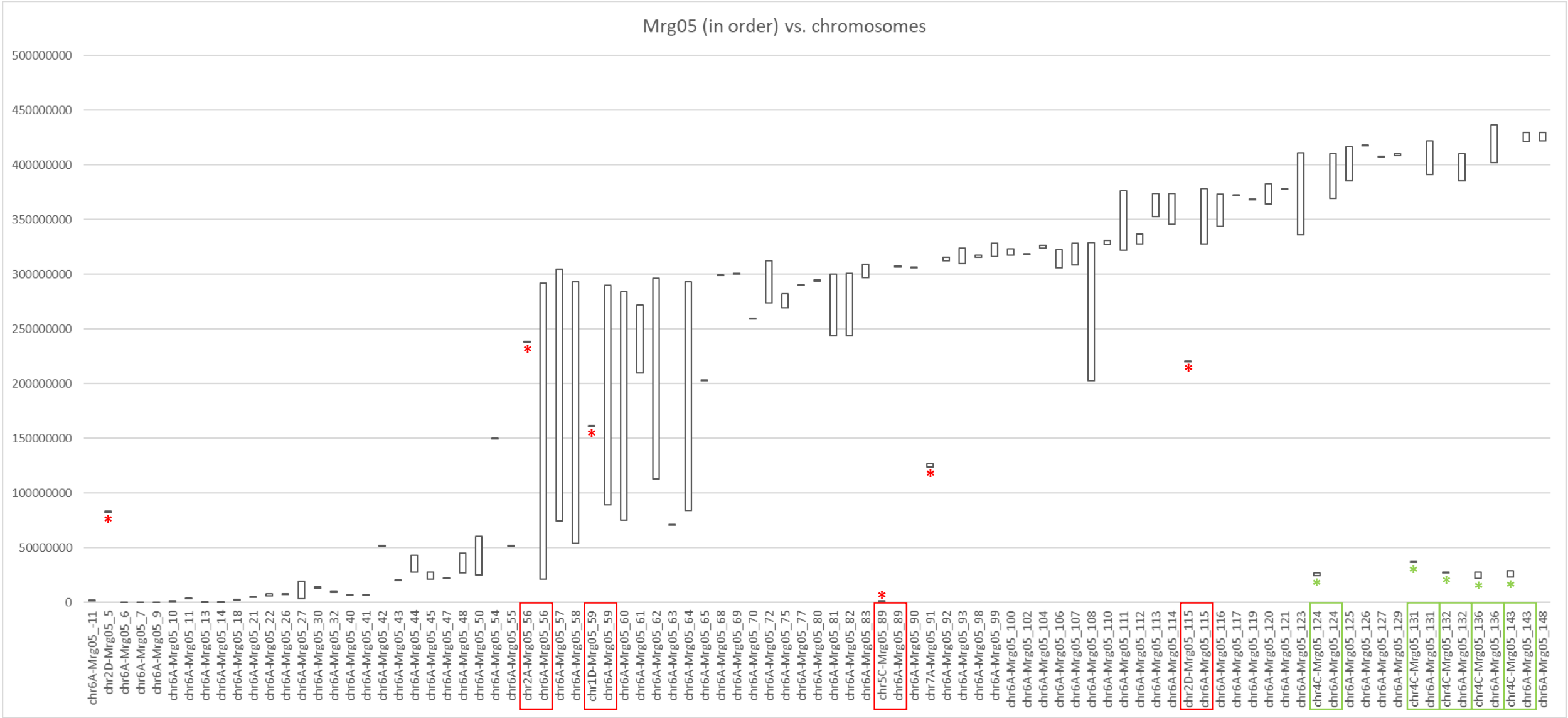
Mostly Chr5C, but

* = other Mrg group regions



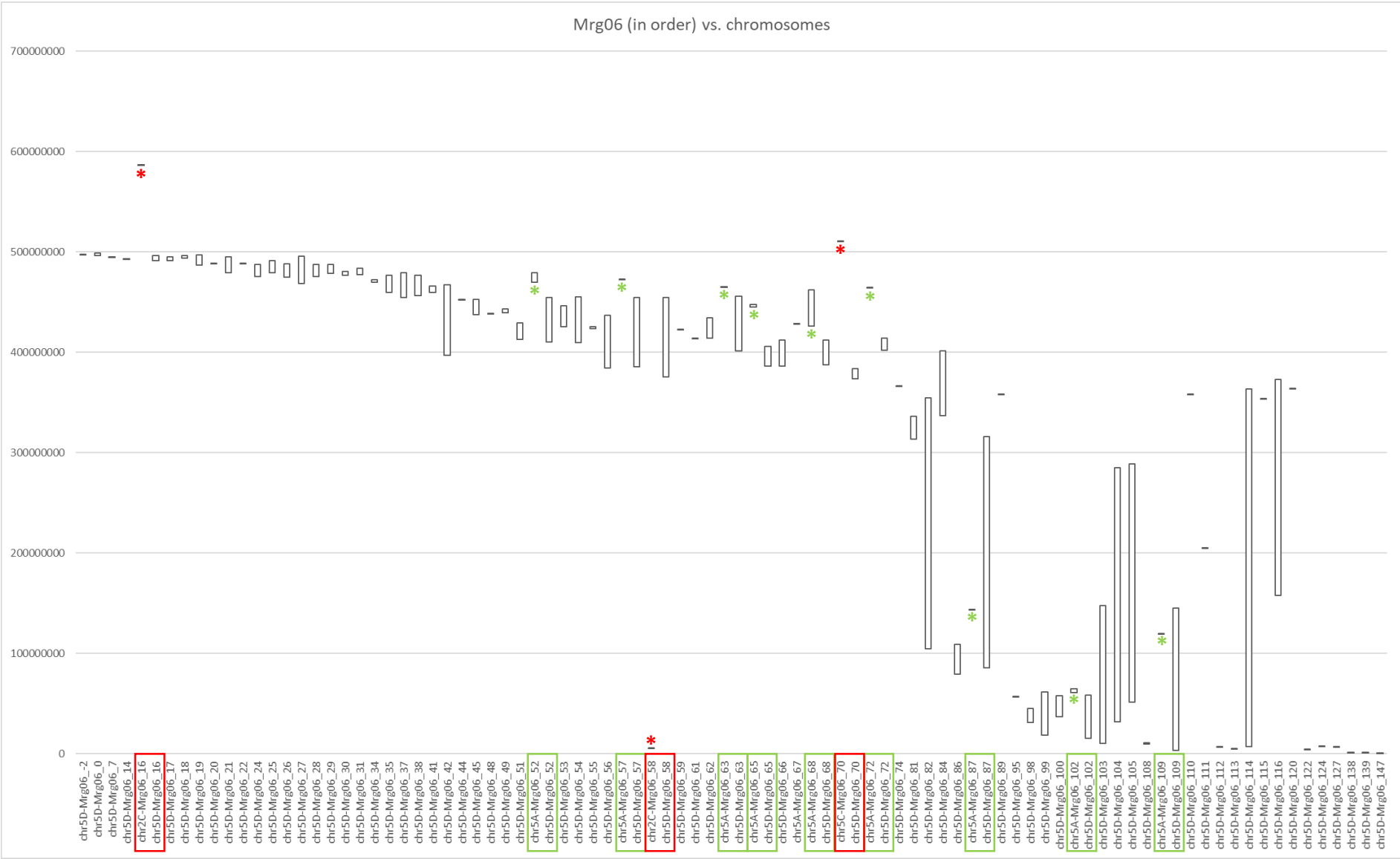
Mostly Chr6D, but

* = other Mrg group regions



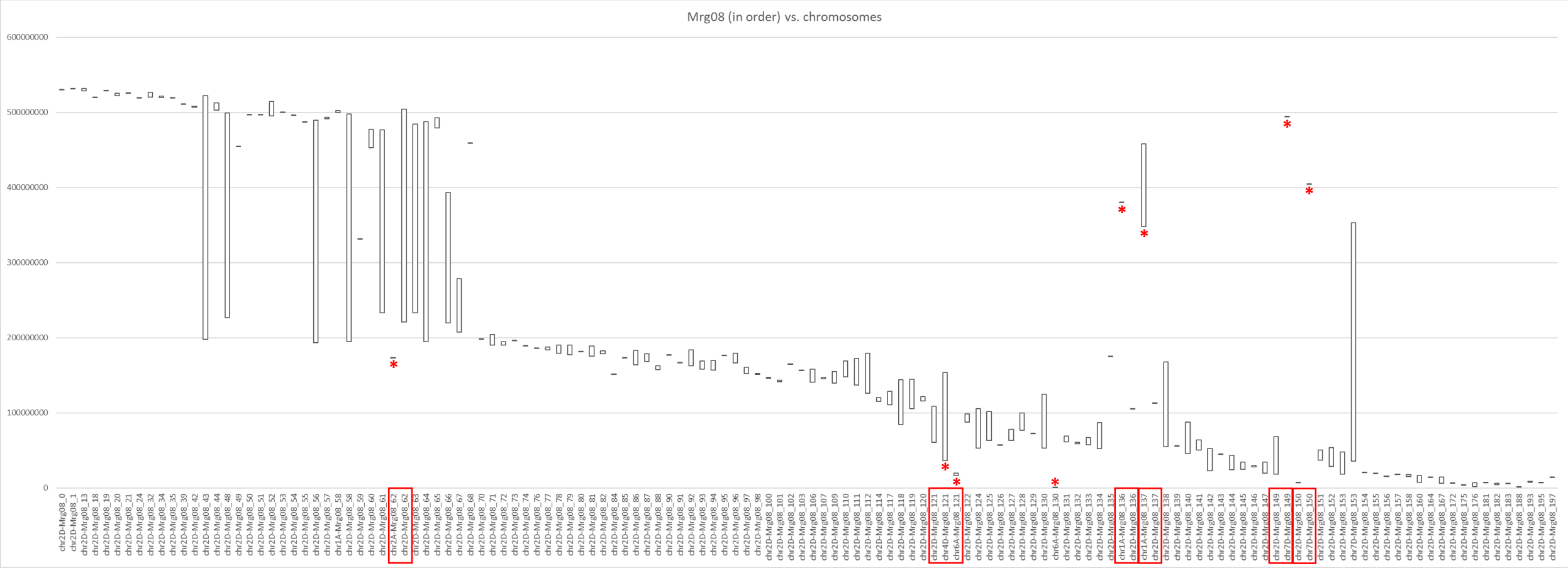
Mostly Chr6A, but

* = Chr4C regions; * = other Mrg group regions



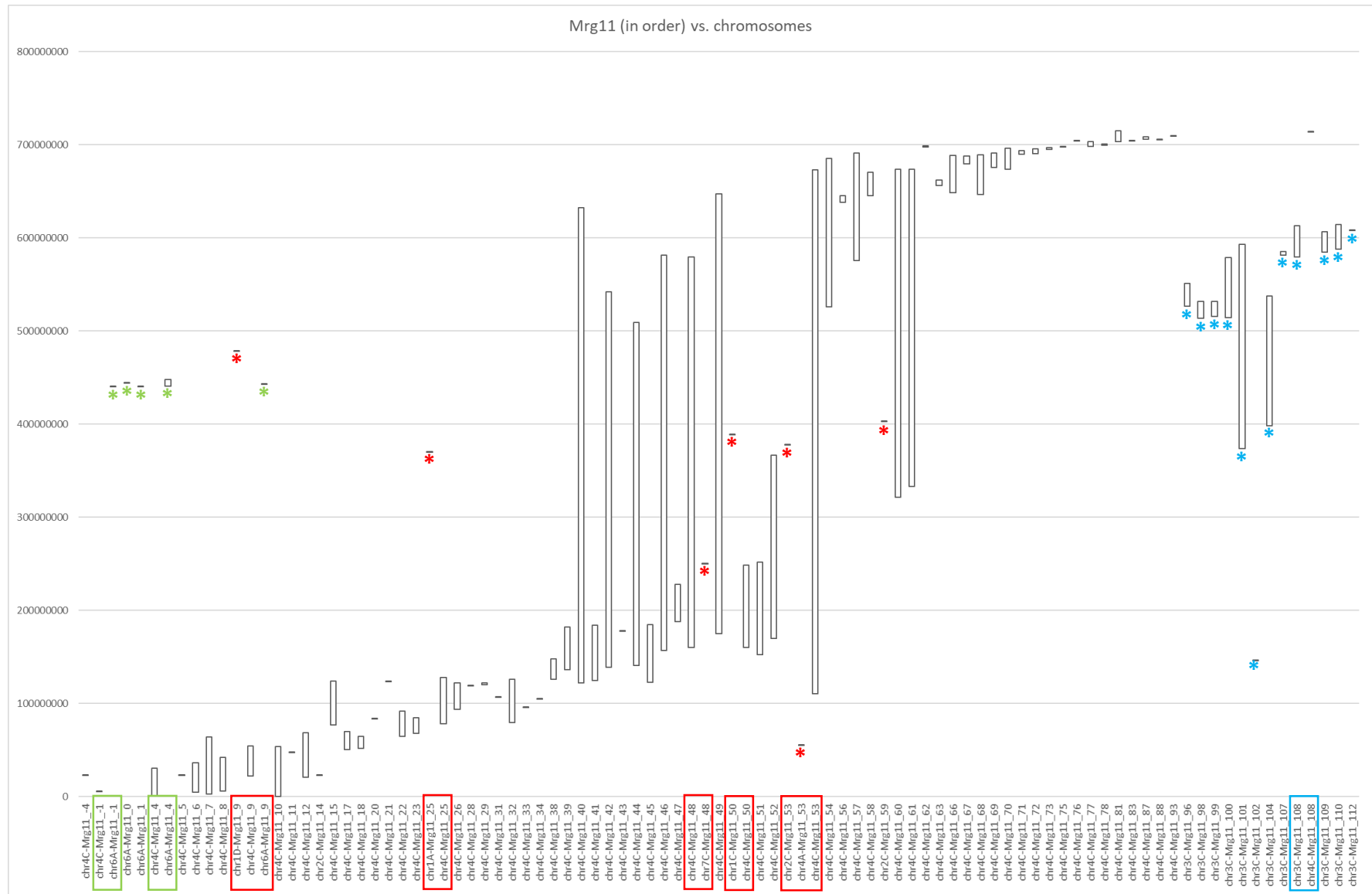
Mostly Chr5D, but

* = Chr5A regions; * = other Mrg group regions



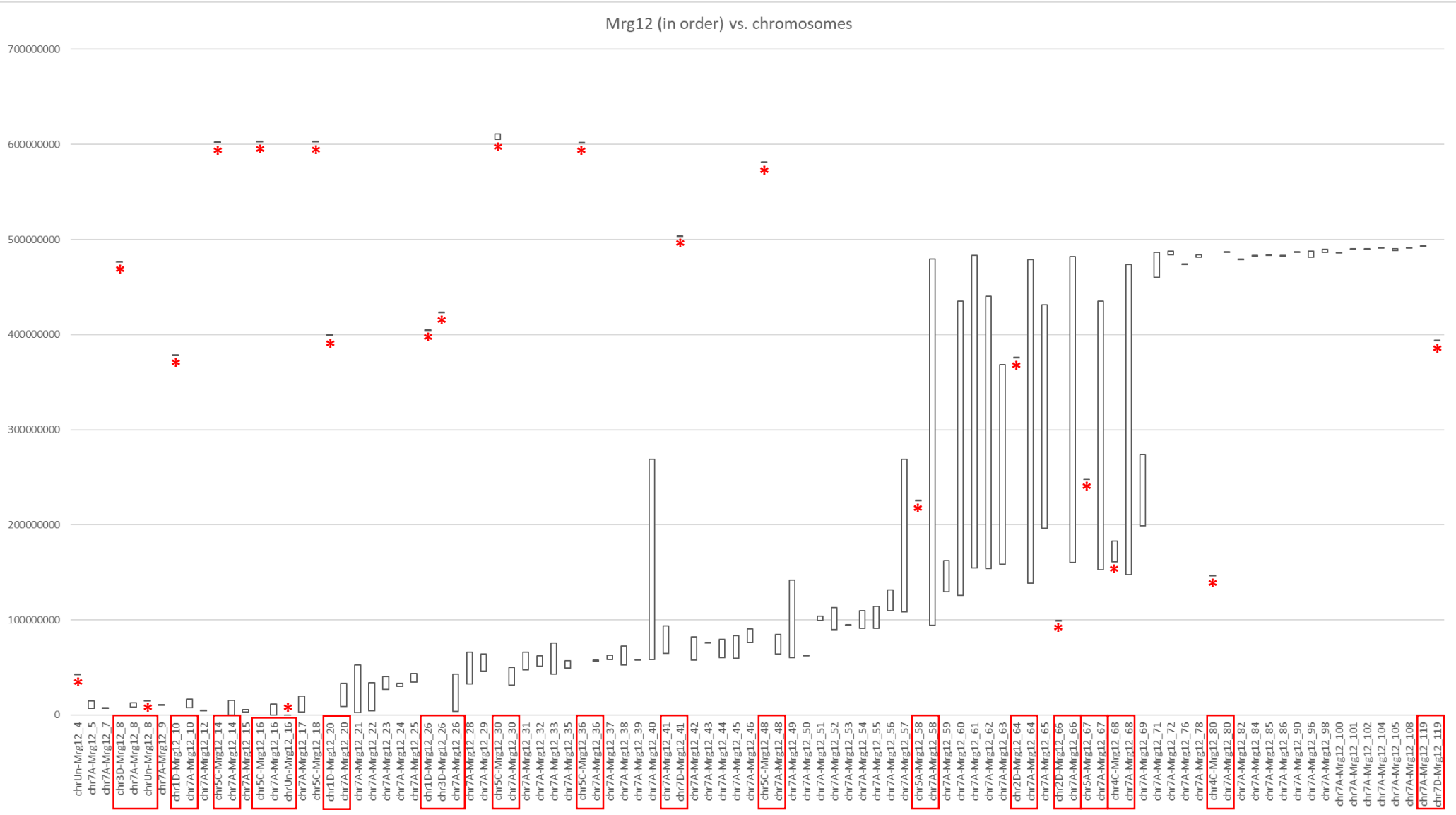
Mostly Chr2D, but

* = other Mrg group regions



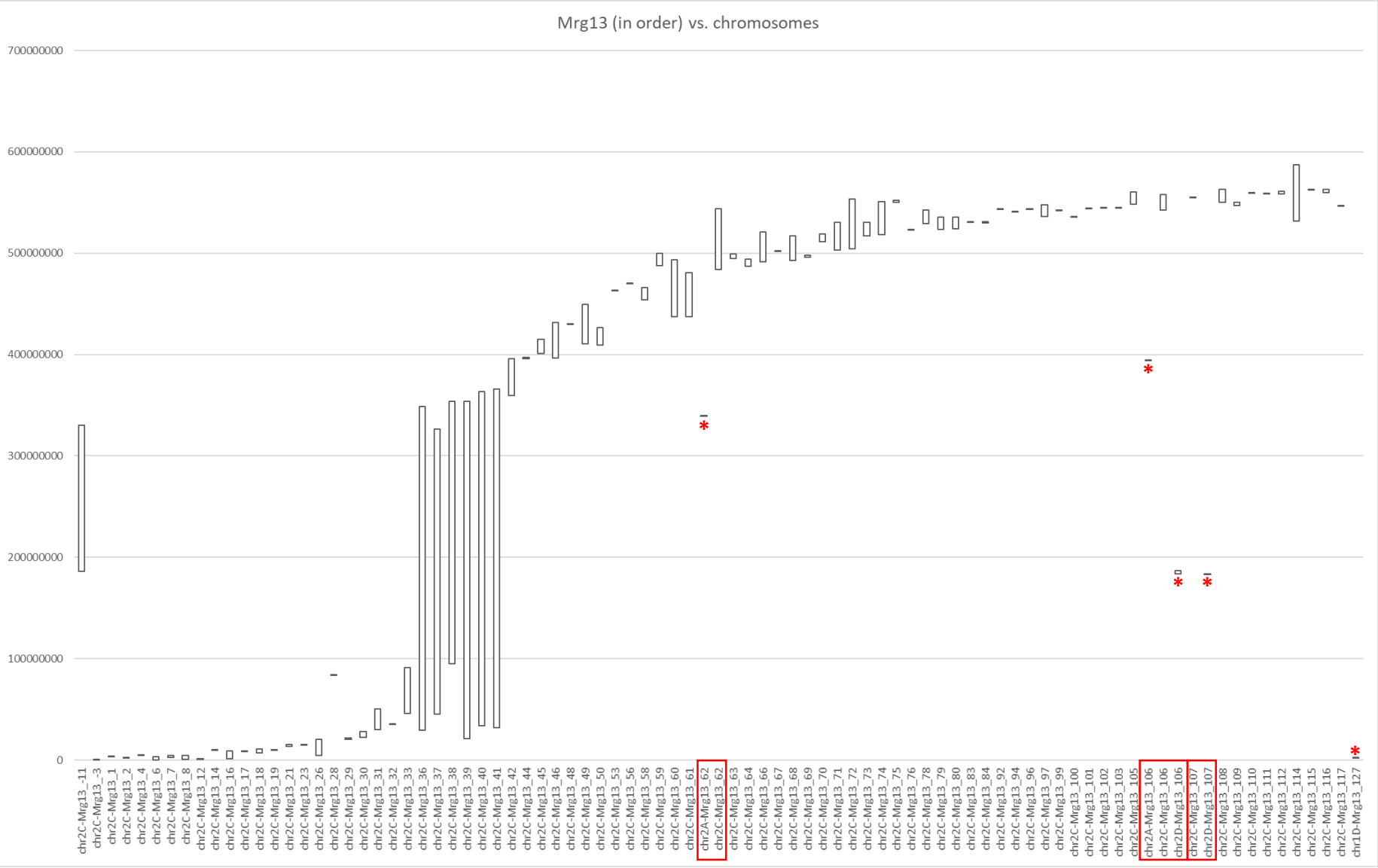
Mostly Chr4C, but

* = Chr6A regions; * = Chr3C regions; * = other Mrg group regions



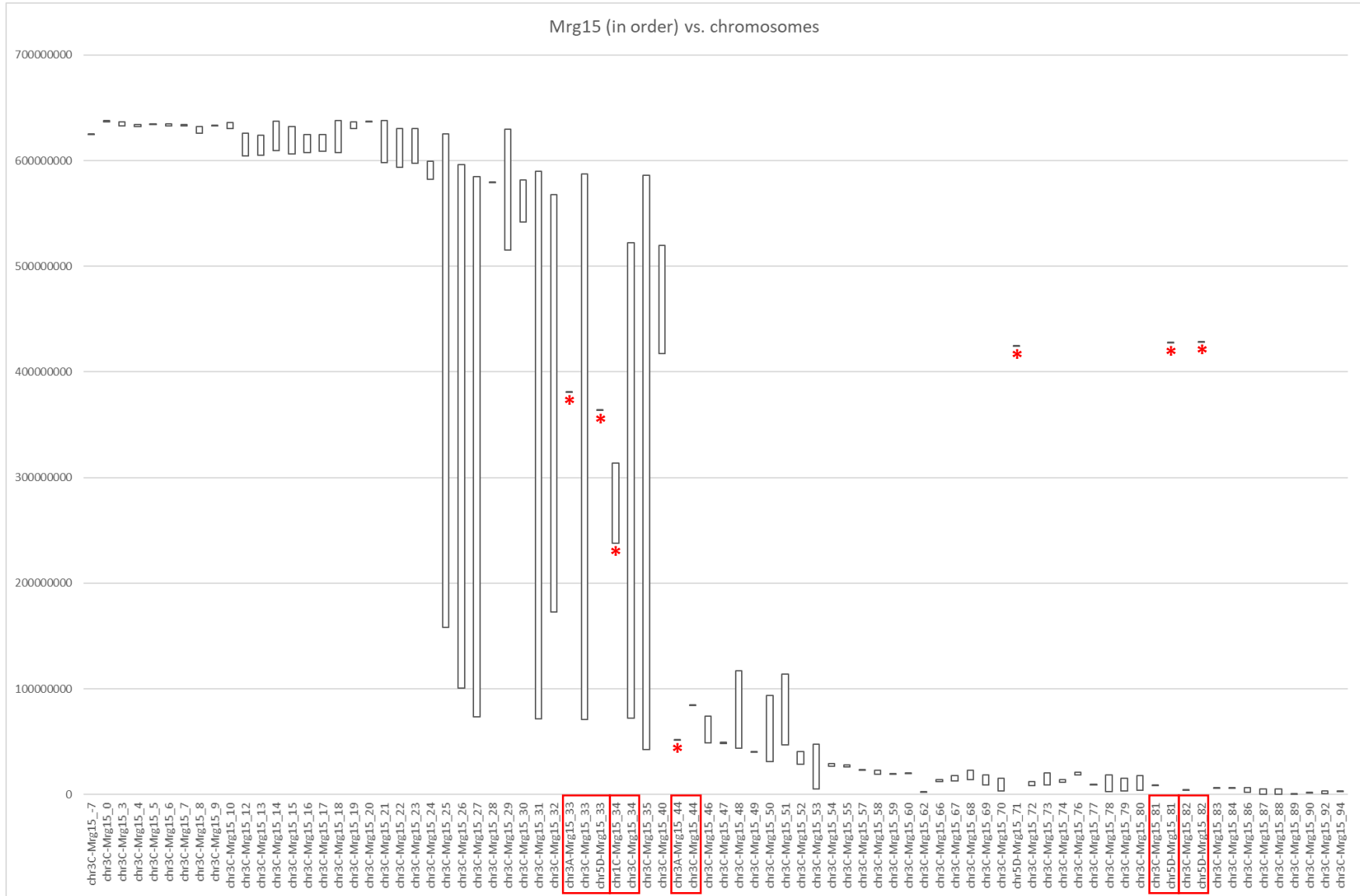
Mostly Chr7A, but

* = other Mrg group regions



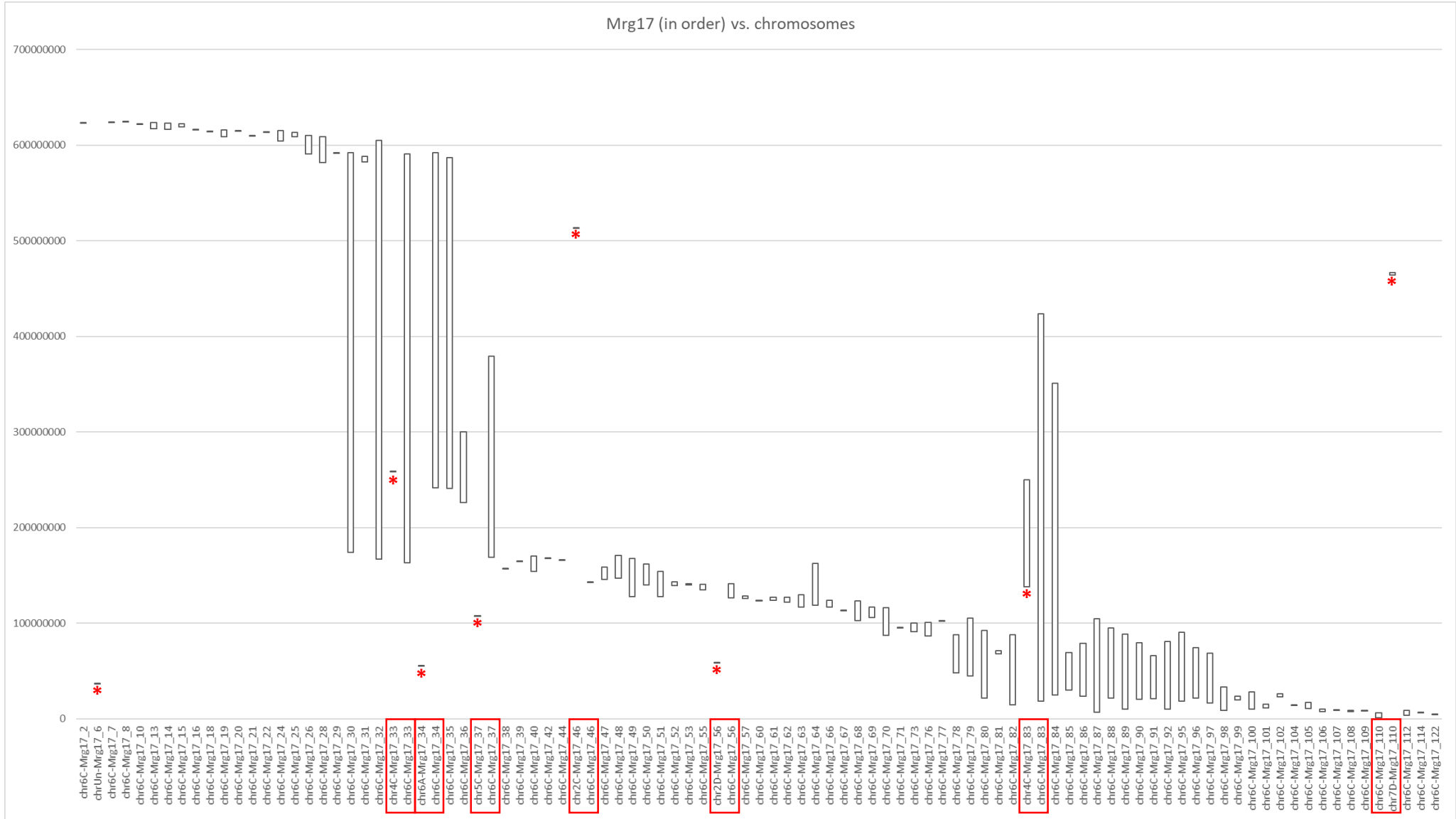
Mostly Chr2C, but

* = other Mrg group regions



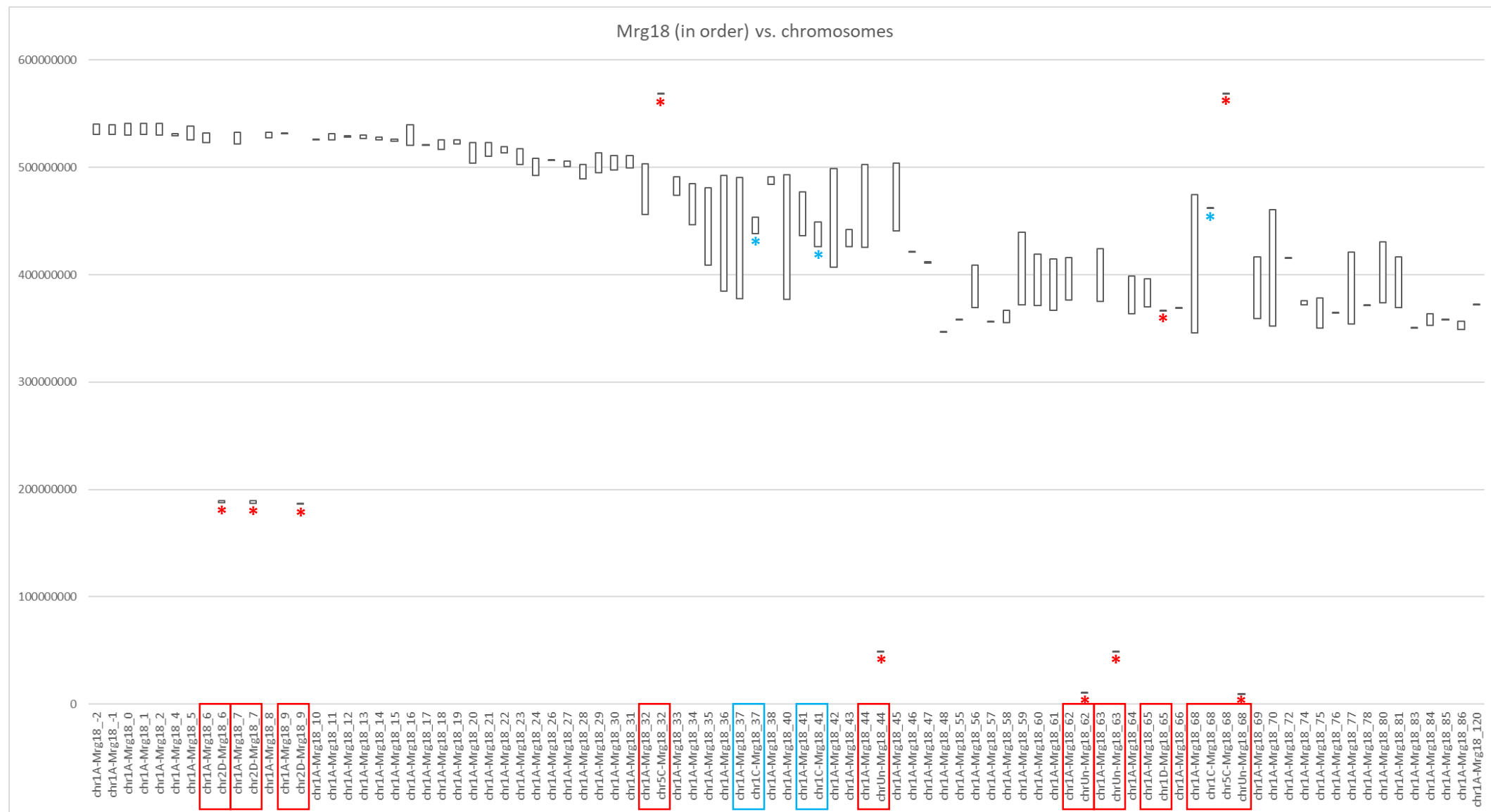
Mostly Chr3C, but

* = other Mrg group regions



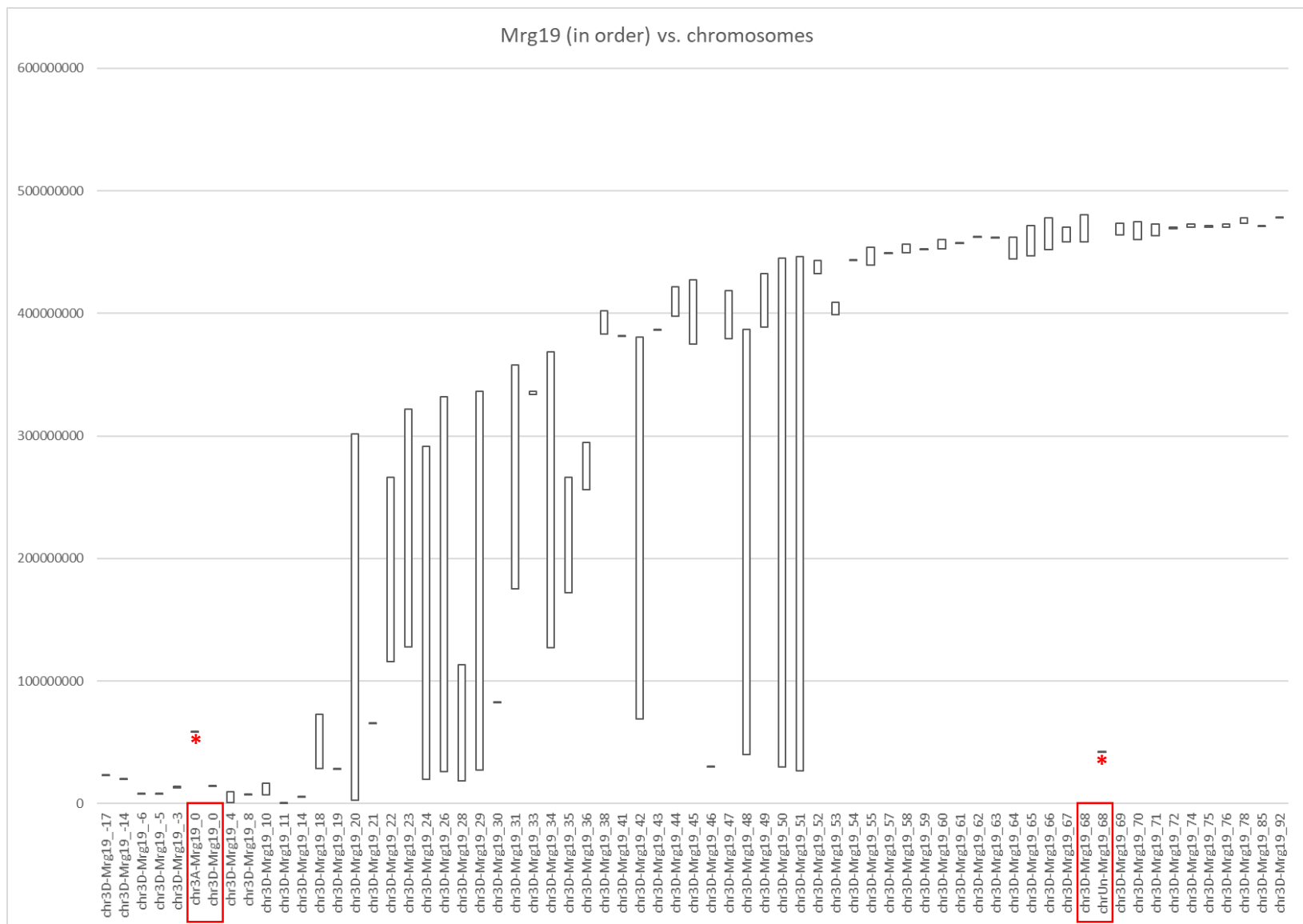
Mostly Chr6C, but

* = other Mrg group regions



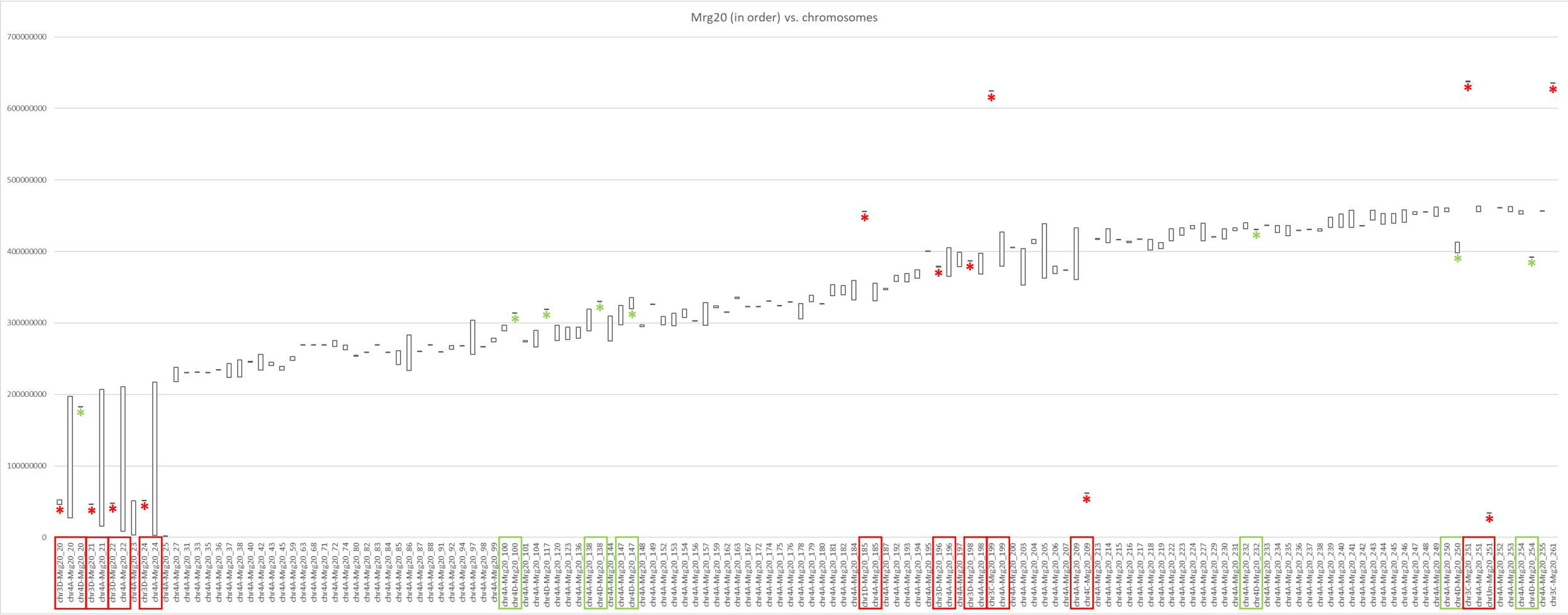
Mostly Chr1A, but

* = Chr1C regions; * = other Mrg group regions

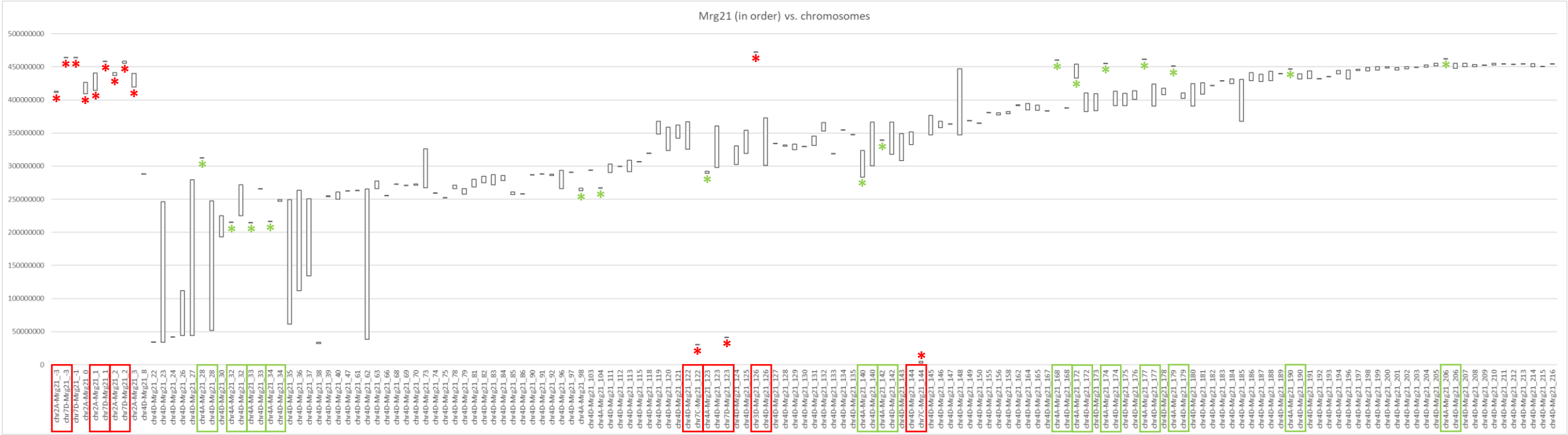


Mostly Chr3D, but

* = other Mrg group regions

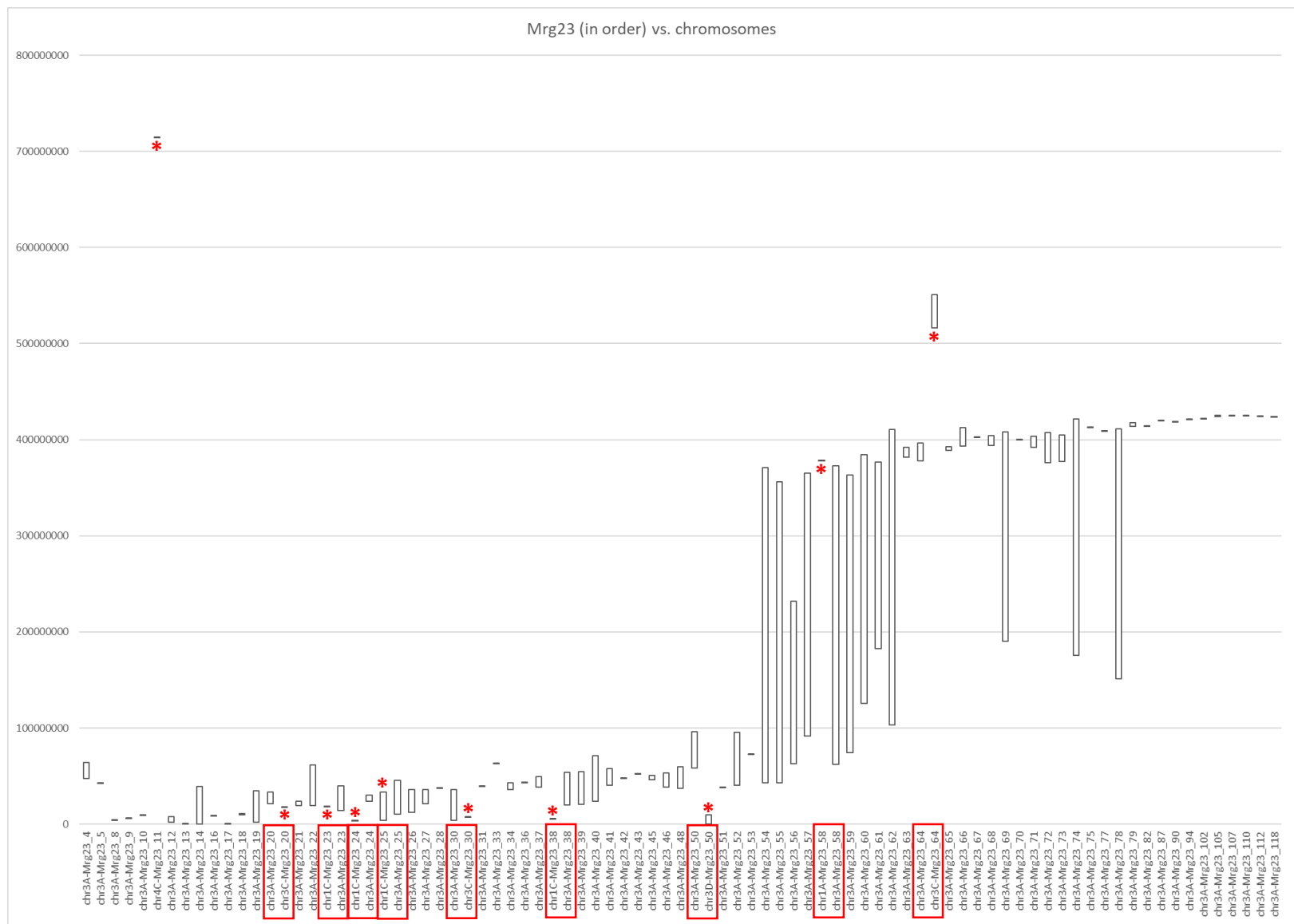


Mostly Chr4A, but
* = Chr4D regions; * = other Mrg group regions



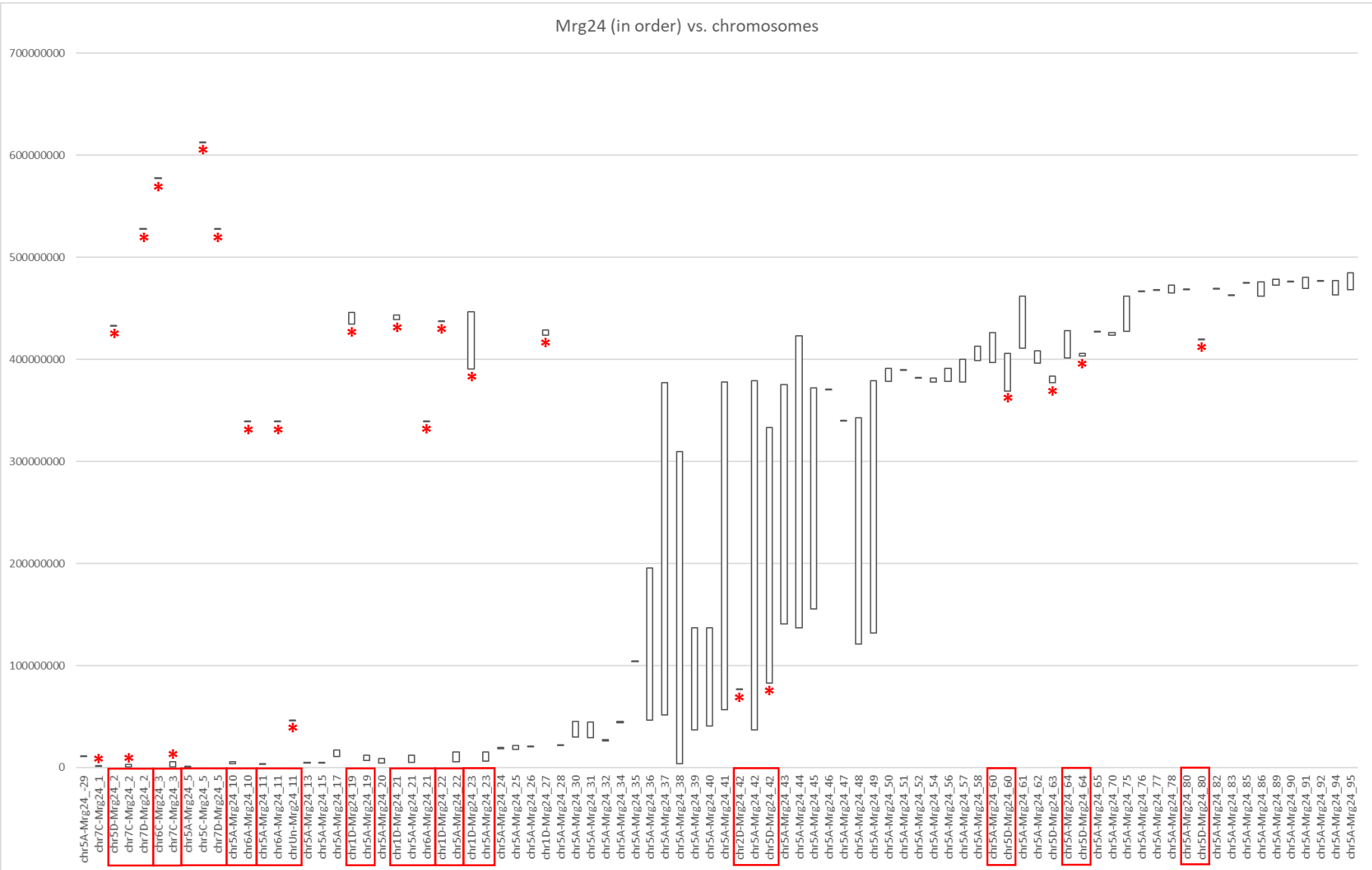
Mostly Chr4D, but

* = Chr4A regions; * = other Mrg group regions

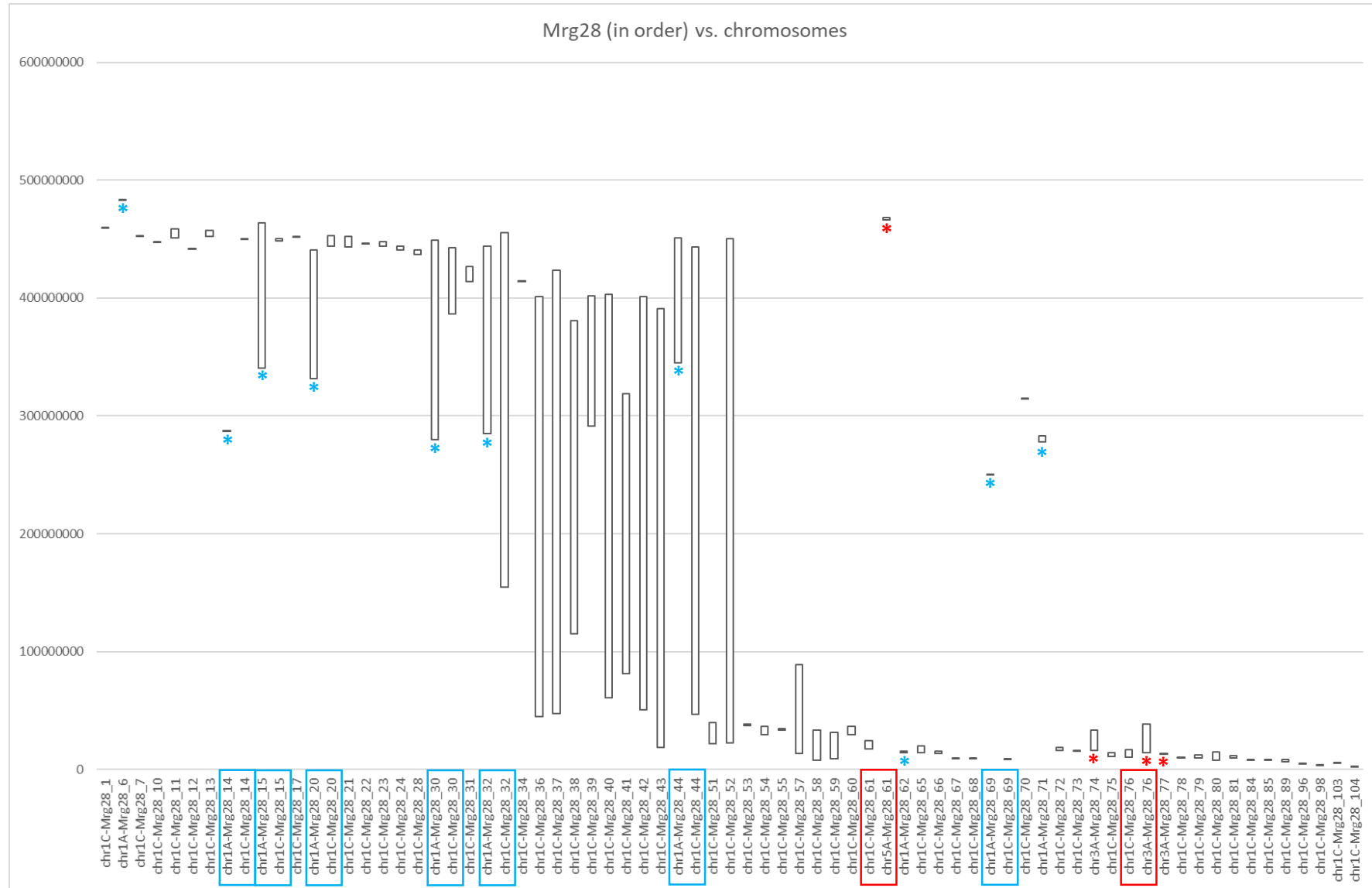


Mostly Chr3A, but

* = other Mrg group regions

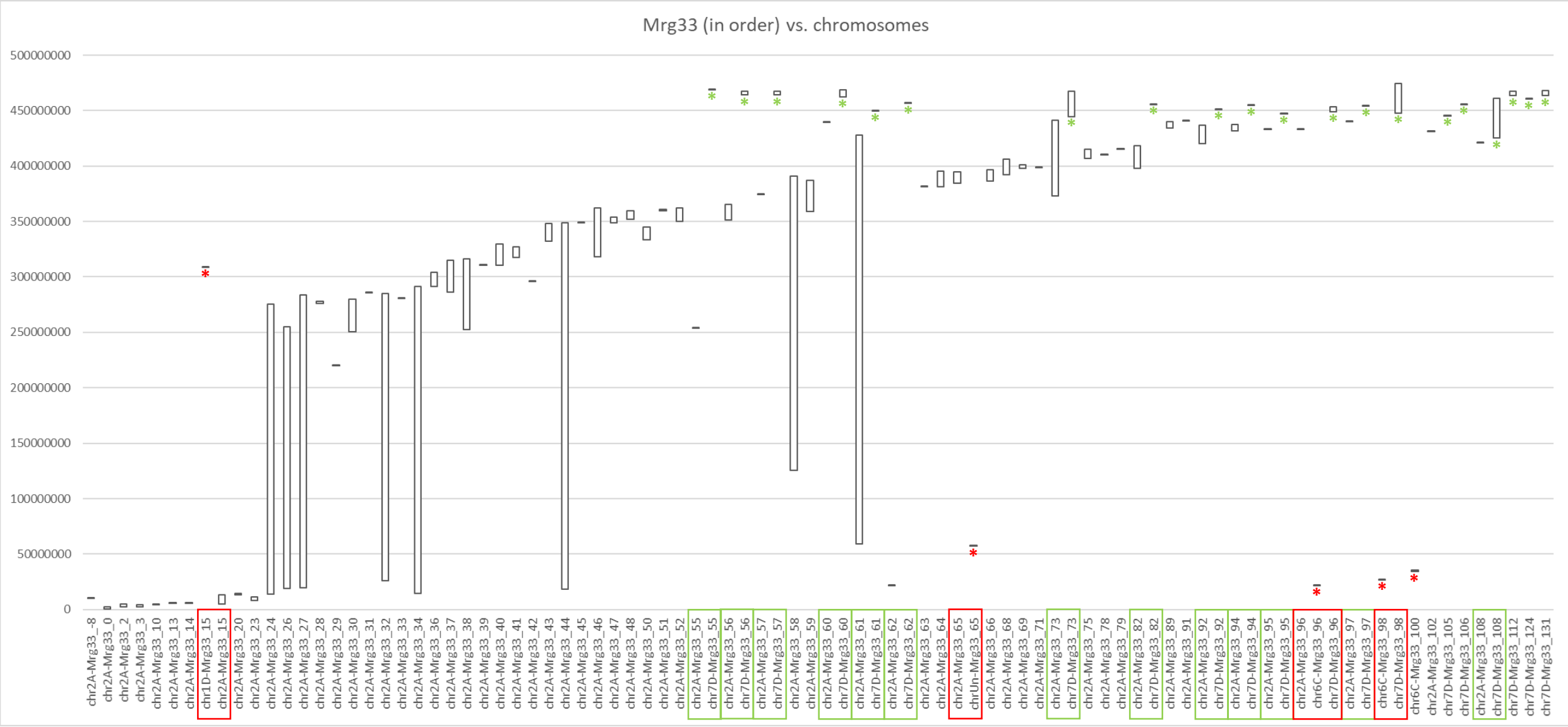


Mostly Chr5A, but
* = other Mrg group regions



Mostly Chr1C, but

* = Chr1A regions; * = other Mrg group regions



Mostly Chr2A, but

* = Chr7D regions; * = other Mrg group regions